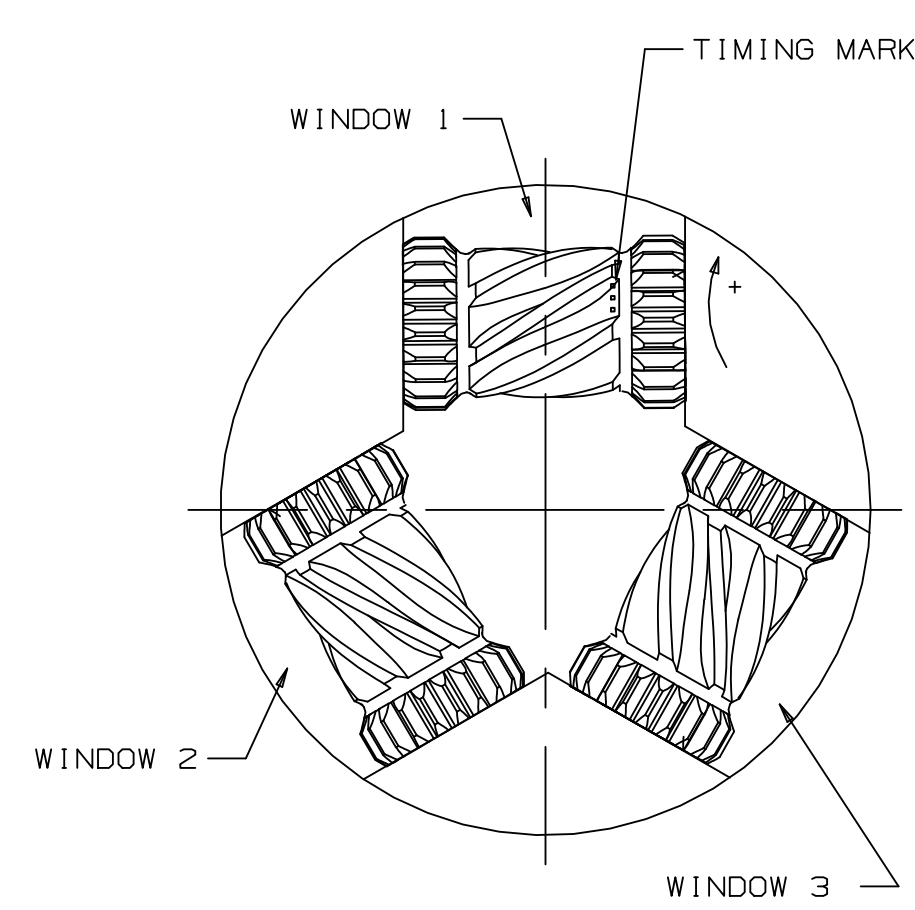
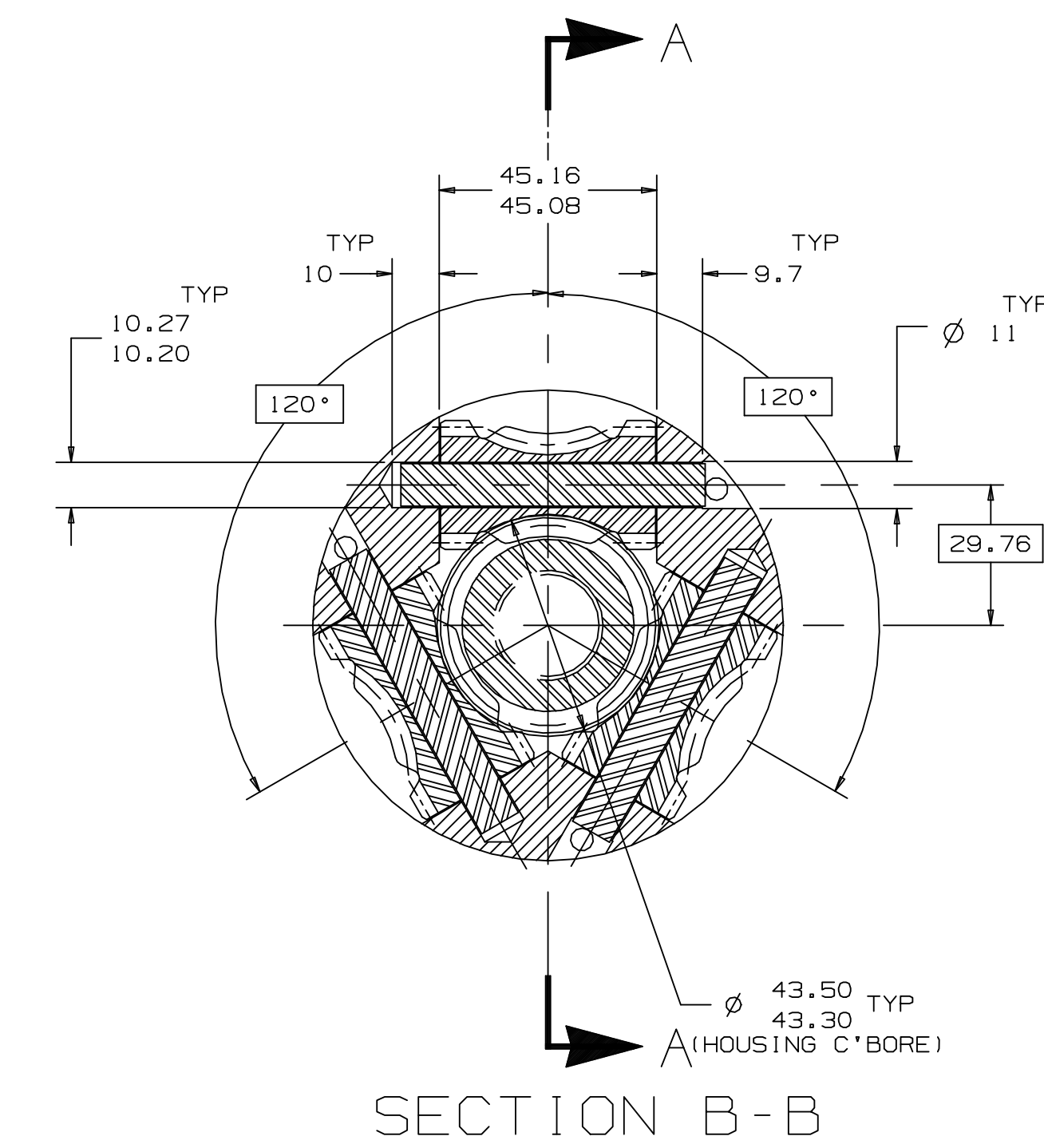
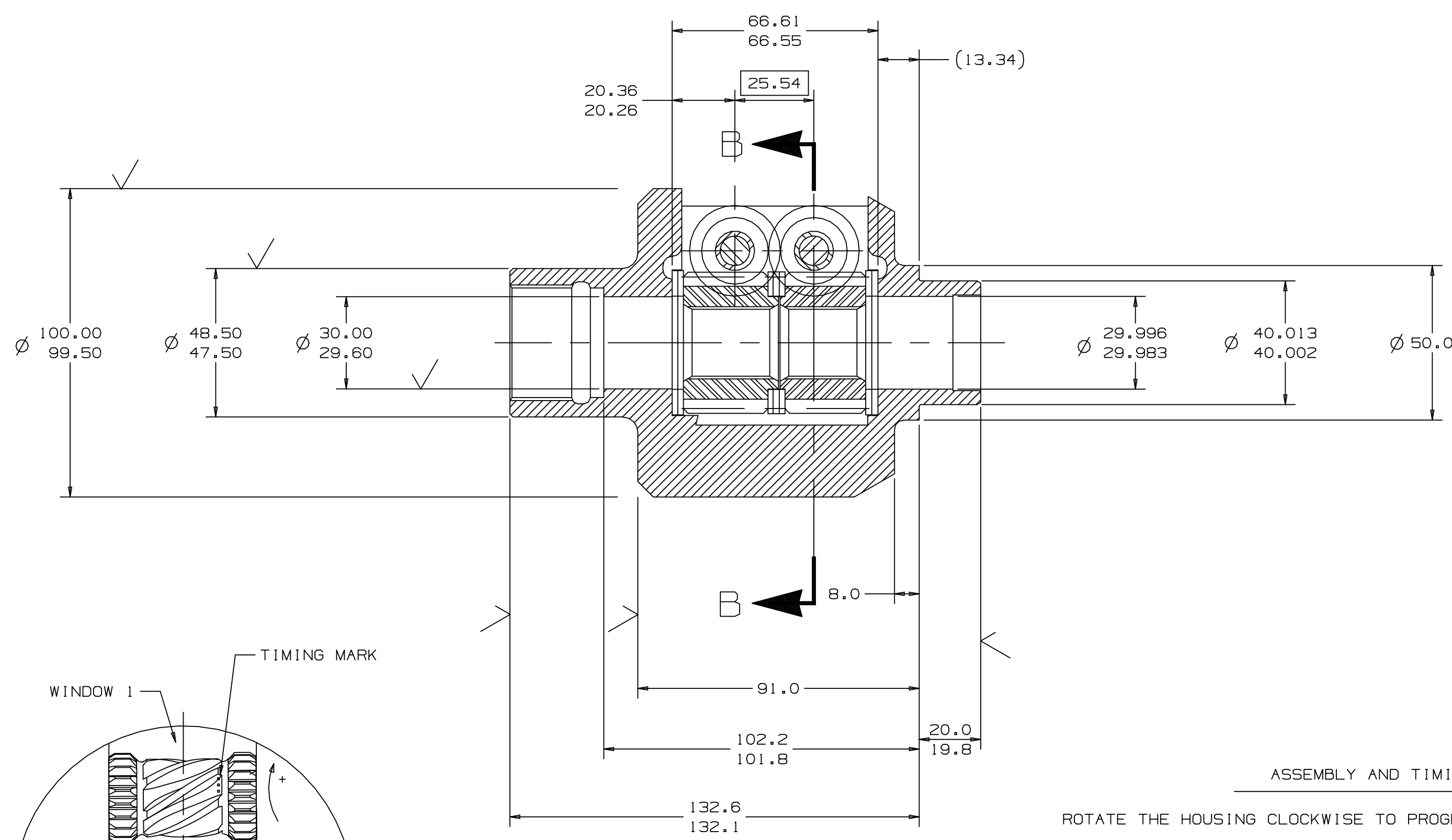


INTERNAL STRAIGHT SIDED SPLINE DATA

NUMBER OF TEETH — — — — — 28
 MODULE — — — — — 0.79375
 SPACE WIDTH ANGLE — — — — — 68°
 PITCH DIAMETER — — — — — (22.2250)
 SPACE WIDTH EFFECTIVE MIN. — — — — — 1.294
 SPACE WIDTH ACTUAL — — — — — 1.331-1.370
 DIMENSION OVER 2 MEASURING PINS — — — — — 19.896-19.753
 PIN/BALL DIAMETER — — — — — 1.60
 MAJOR DIAMETER — — — — — 23.300-23.400
 FILLET RADIUS — — — — — MAX. 0.30
 MINOR DIAMETER — — — — — 21.600-21.700



SECTION A-A

SECTION B-B

ASSEMBLY AND TIMING NOTES:
 ROTATE THE HOUSING CLOCKWISE TO PROGRESS FROM WINDOW 1 TO 2 TO 3.

ALWAYS ASSEMBLE THE ELEMENT GEARS SO THAT THE TIMING MARK IS TOWARD THE SAME SIDE OF THE WINDOW. ALSO, THE SIDE GEARS MUST BE KEPT COAXIAL FOR PROPER ASSEMBLY.

THE TIMING MARK IS LOCATED ON THE TOP OF ONE HELICAL TOOTH.
 TIMING IS GIVEN IN TERMS OF THE DEGREES THAT THE GEAR IS ROTATED OUTWARD TOWARDS YOU. ZERO (0) INDEX REFERS TO THE TIMING MARK BEING STRAIGHT UP.

TIMING			
WINDOW	1	2	3
TOP	0	30	120
BOTTOM	0	90	120

ECL	REVISION	DR	DATE
1	RELEASE	MD	22DEC99

<http://www.torsen.com>

TOYODA-KOKI AUTOMOTIVE
 TORSEN NORTH AMERICA, INC.
 ROCHESTER, N.Y.

FAX (585) 328-5477 TEL (585) 464-5000

MACHINED TOLERANCES UNLESS OTHERWISE SPECIFIED	THIRD ANGLE PROJECTION	SCALE
DIM. ARE IN MILLIMETERS		
UNTOL. DIMENSION ±0.5		
UNTOL. ∠DIM. ±30 MINUTES	APPROVAL	DATE
FILLET AND RADIUS 1.5	DR. BY M. DAMICK	21DEC99
SURFACE ROUGHNESS 3.2	DES.	
BREAK SHARP EDGES	ENG.	
ANSI Y14.5M-1982	CHK.	
MATERIAL SPEC	GEAR SUMMARY SPEC	
ALTERNATE	PROCESS SPEC.	
HEAT TREAT SPEC.	CAST./BLANK NO.	
PART NAME	UNIVERSITY SPECIAL	
PART NUMBER	012000	DWG SIZE D

NOTICE: The DATA contained herein is PROPRIETARY and CONFIDENTIAL. Reproduction or publication of any part requires written consent from TOYODA-KOKI AUTOMOTIVE TORSEN N. A., INC. This data is the property of TOYODA-KOKI AUTOMOTIVE TORSEN N. A., INC. Possession of this data confers no license to use or disclose to others for any purpose whatsoever. All rights reserved. Copyright © since 1990.